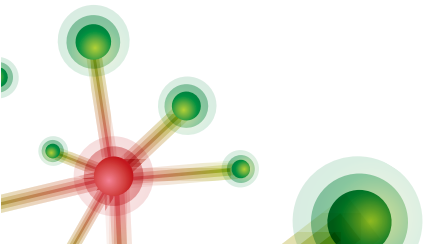
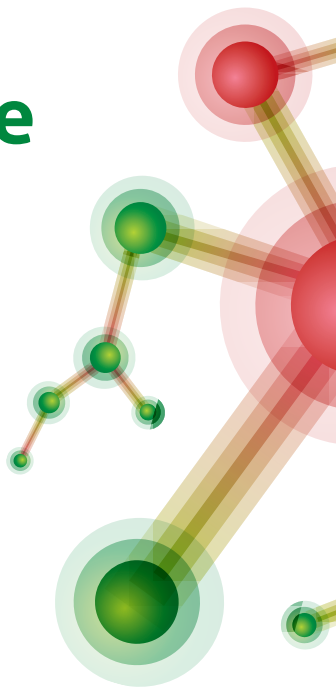


LM Agarose

Low Melting Point



LM Agarose

Low Melting Point

The **LM Agarose Low Melting Point** is ideal for preparative electrophoresis and the recovery of DNA and RNA. It is characterised by low melting and gelling point. When working with the **LM Agarose Low Melting Point**, there is no need for extracting the DNA from a gel before manipulations such as ligation, transformation, restriction, amplification and sequencing. It is useful for the separation of nucleic acids in the range of 100–25.000 bp.

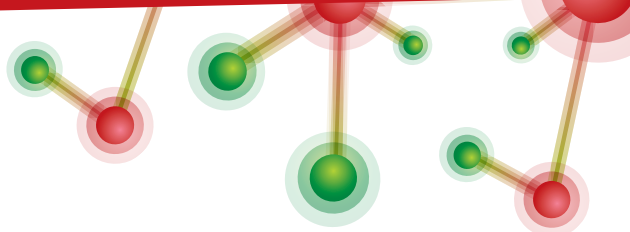
LM Agarose Low Melting Point is manufactured employing an advanced and environmentally friendly process free of any organic solvent use.

Features and advantages

- Low melting and gelling point
- High clarity and low background
- DNase/ RNase/ protease-free
- High purity (Molecular Biology Grade)

Applications

- Conventional and preparative electrophoresis of nucleic acids in a 100–25.000 bp range
- Recovery of high quality RNA and DNA after electrophoretic separation
- Direct enzymatic manipulations in the dissolved agarose gel



Additional considerations

For obtaining the best separation of DNA fragments, the following recommendations should be applied:

DNA size range (kbp)	2-25	1-15	0.5-8	0.2-4	0.1-2
Percentage of agarose gel (1x TAE buffer)	0.8%	1.0%	1.5%	1.8%	2.0%
Percentage of agarose gel (1x TBE buffer)	0.7%	0.9%	1.3%	1.6%	1.8%

Usage

Dissolve the appropriate quantity of agarose in 1x TAE/ 1x TBE buffer by heating the suspension in a microwave or water bath. Use caution when handling as the temperature of the solution may be extremely high. Cool the solution to approx. 60°C before pouring.

The detection of nucleic acids in agarose gels can be carried out with ethidium bromide or other commercially available stains for DNA visualization.

LM Agarose Low Melting Point

Component	AG43-005
LM Agarose Low Melting Point	50 g

Specification	
CAS No.	39346-81-1
Appearance	White powder
EEO	≤ 0.1
Gel strength (1% gel)	≥ 200 g/cm ²
Fusion point (1.5% gel)	≤ 65°C
Gelling point (1.5% gel)	26-30°C
Ash	≤ 0.5%
Moisture	≤ 10%
Sulfate	≤ 0.1%
DNases / RNases	None detected
Proteases / Endonucleases	None detected

Storage & shipping

Storage: store at room temperature

Shipping conditions: shipping at room temperature

 For research use only

Date of purchase

Warranty

24 months from the date of purchase